

Data in London

April update

Cyclists and Pedestrians

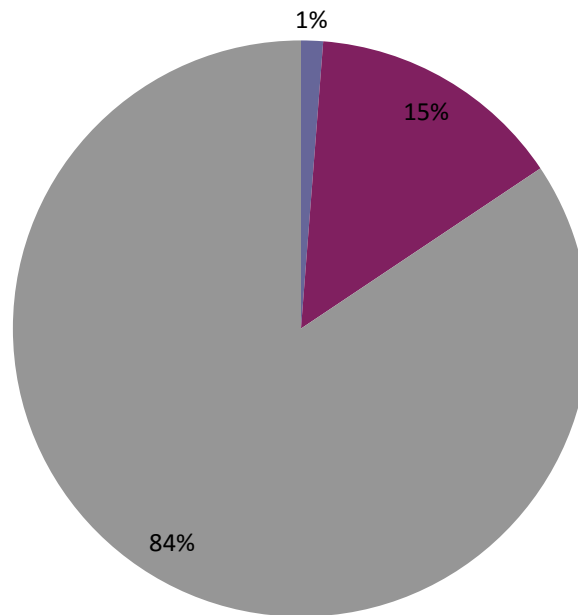
Data

- All pedestrian casualties by borough, severity and pedestrian location in Greater London - 36mths to 31 July 2015 (provisional)
- Pedestrian casualties in conflict with pedal cycles by borough, severity and pedestrian location in Greater London - 36mths to 31 July 2015 (provisional)
- Pedestrian casualties in conflict with HGVs (7.5T and over) by borough, severity and pedestrian location in Greater London - 36mths to 31 July 2015 (provisional)

All pedestrian casualties (3 year)

Pedestrian injuries 36 months (to 31 July 2015)

■ Fatal ■ Serious ■ Slight



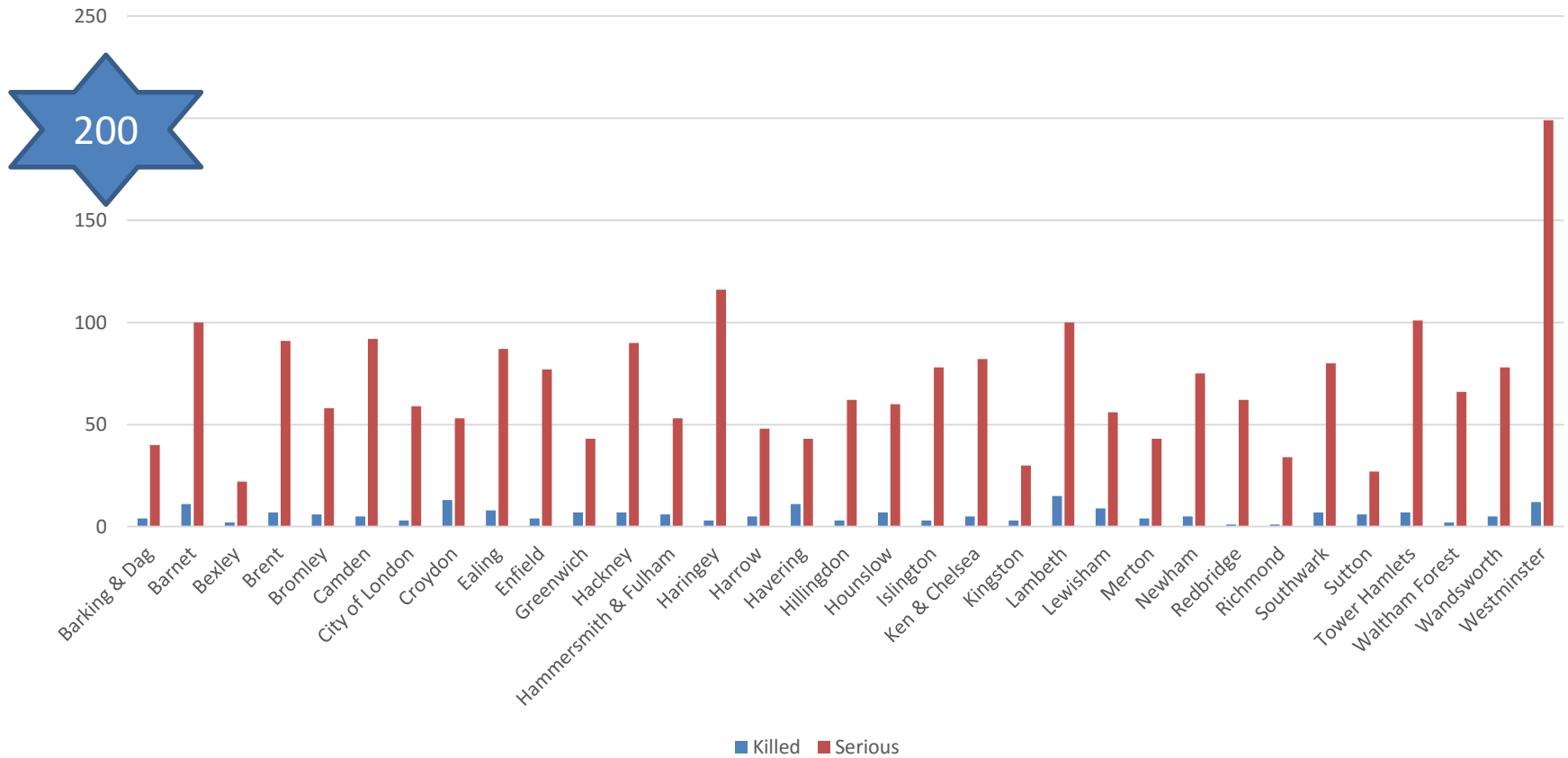
Fatal = 197

Serious = 2305

Slight = 13,519

Pedestrian Ksi's

Total pedestrians (3 year period) up to July 2015



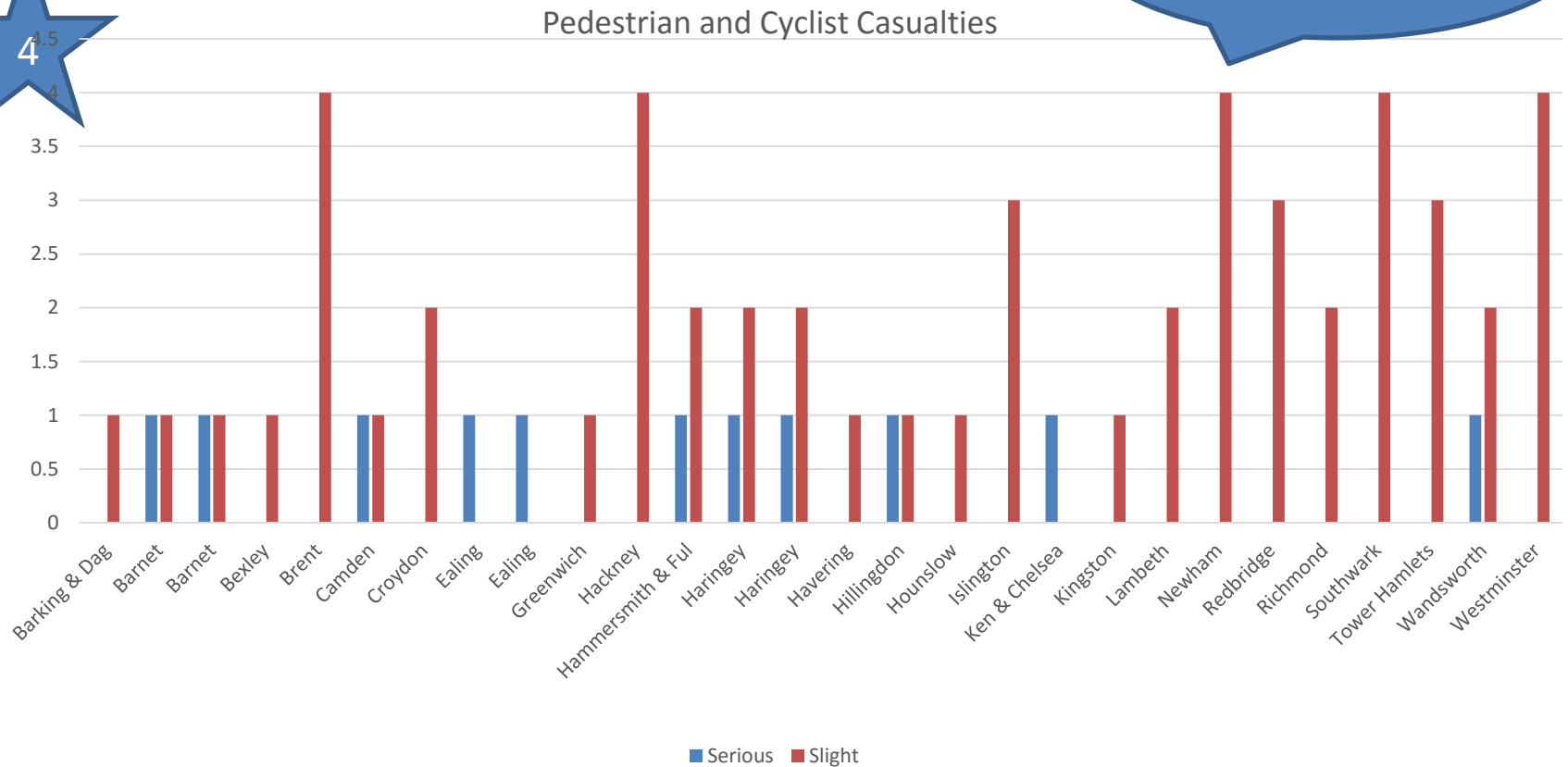
Pedestrians and Cyclists in London

Ped & P/C			
25 boroughs			
	Killed	Serious	Slight
Barking & Dag			1
Barnet		1	1
Barnet		1	1
Bexley			1
Brent			4
Brent			4
Camden		1	1
Croydon			2
Ealing		1	
Ealing		1	
Greenwich			1
Hackney			4
Hammersmith & Ful		1	2
Haringey		1	2
Haringey		1	2
Havering			1
Hillingdon		1	1
Hounslow			1
Islington			3
Ken & Chelsea		1	
Kingston			1
Lambeth			2
Newham			4
Redbridge			3
Richmond			2
Southwark			4
Tower Hamlets			3
Wandsworth		1	2
Westminster			4
Total		11	57

Ped' and Cyclist on pavement or verge



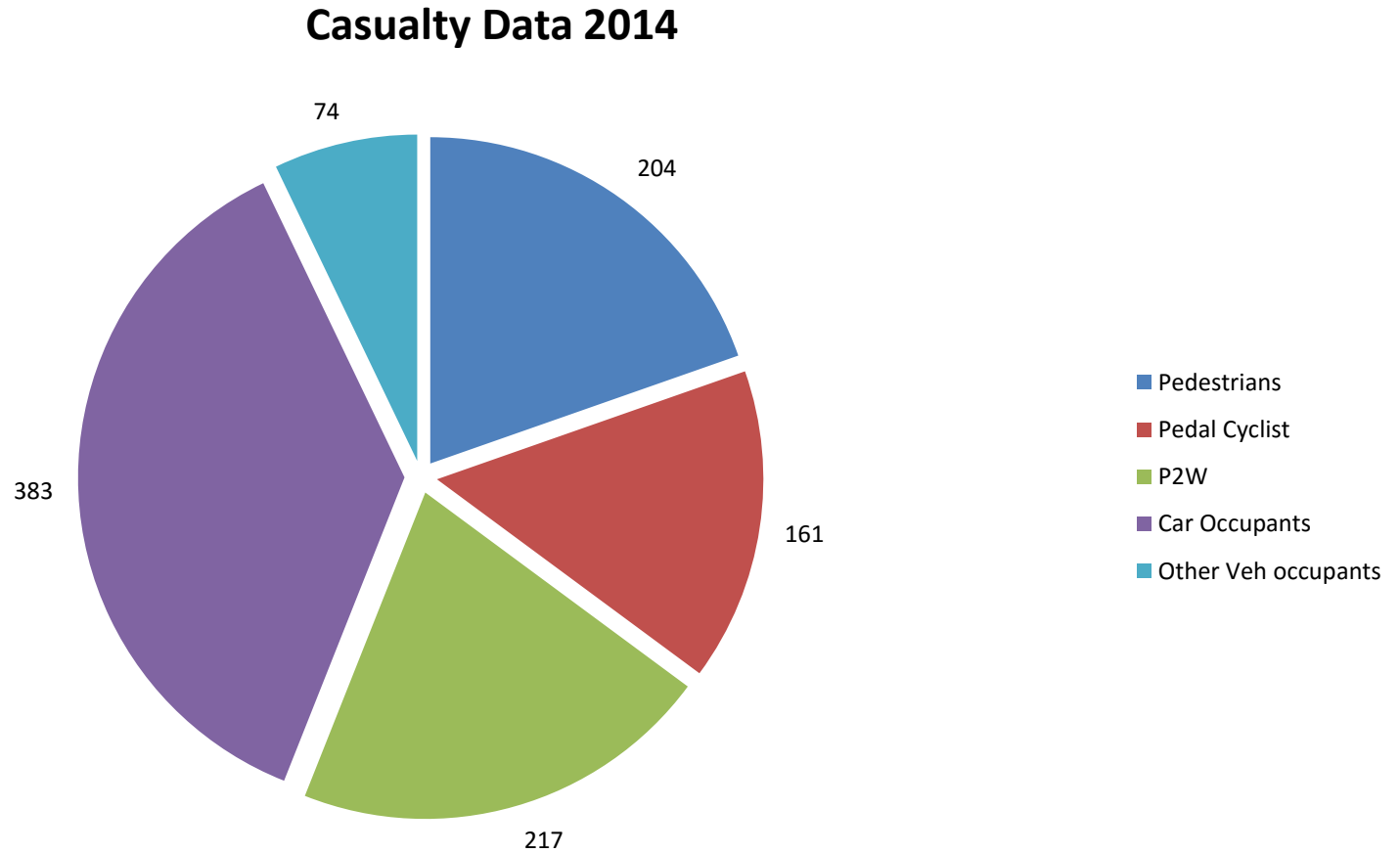
Slight and Serious casualties
No fatalities



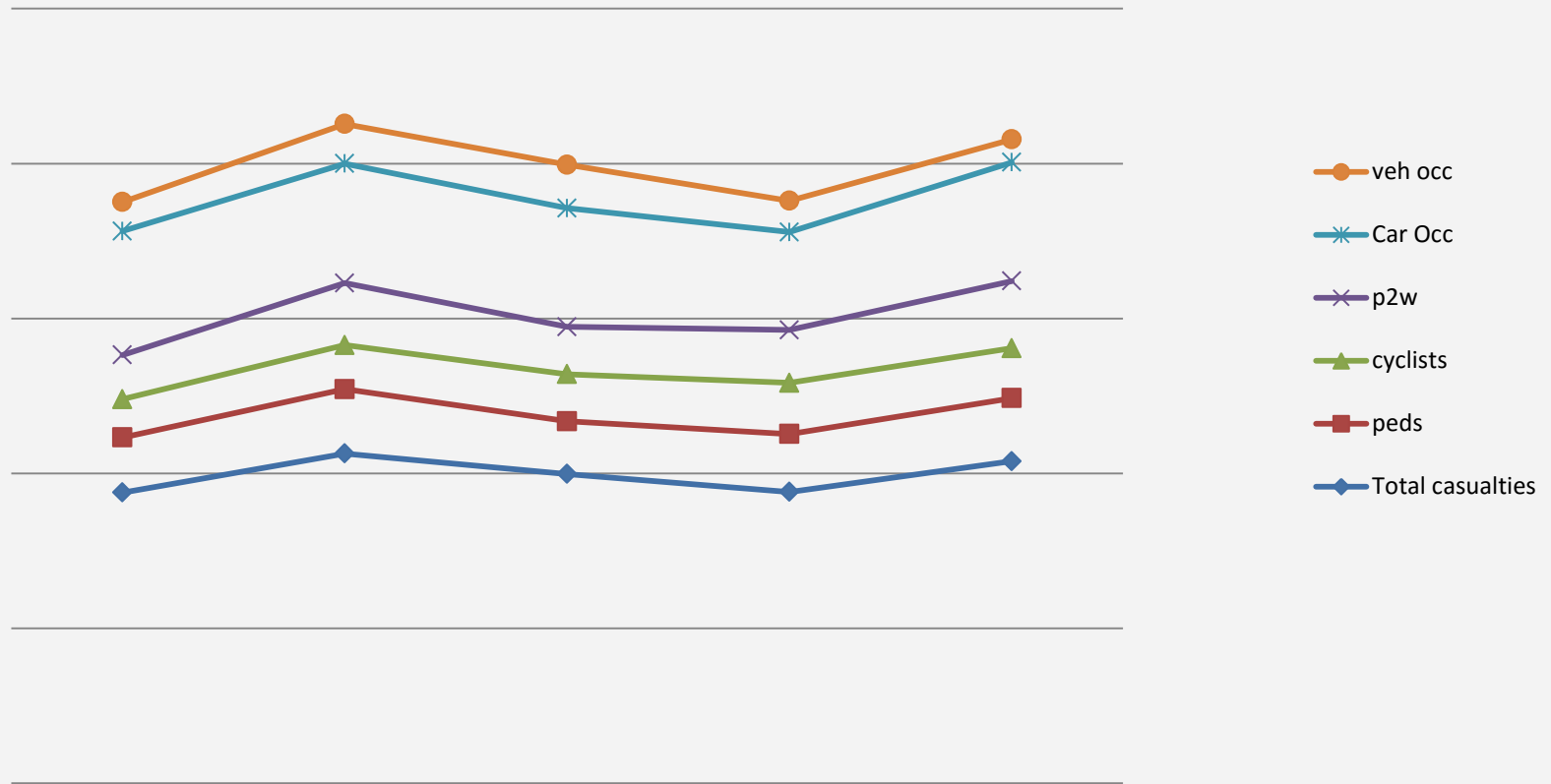
Considerations

- Exact numbers do not necessarily show a greater risk or danger
- Must look at numbers walking, population size, car ownership, modes of travel
- Can look at your own boroughs rolling yearly average - gives a better idea of trends!

In more detail - Lewisham

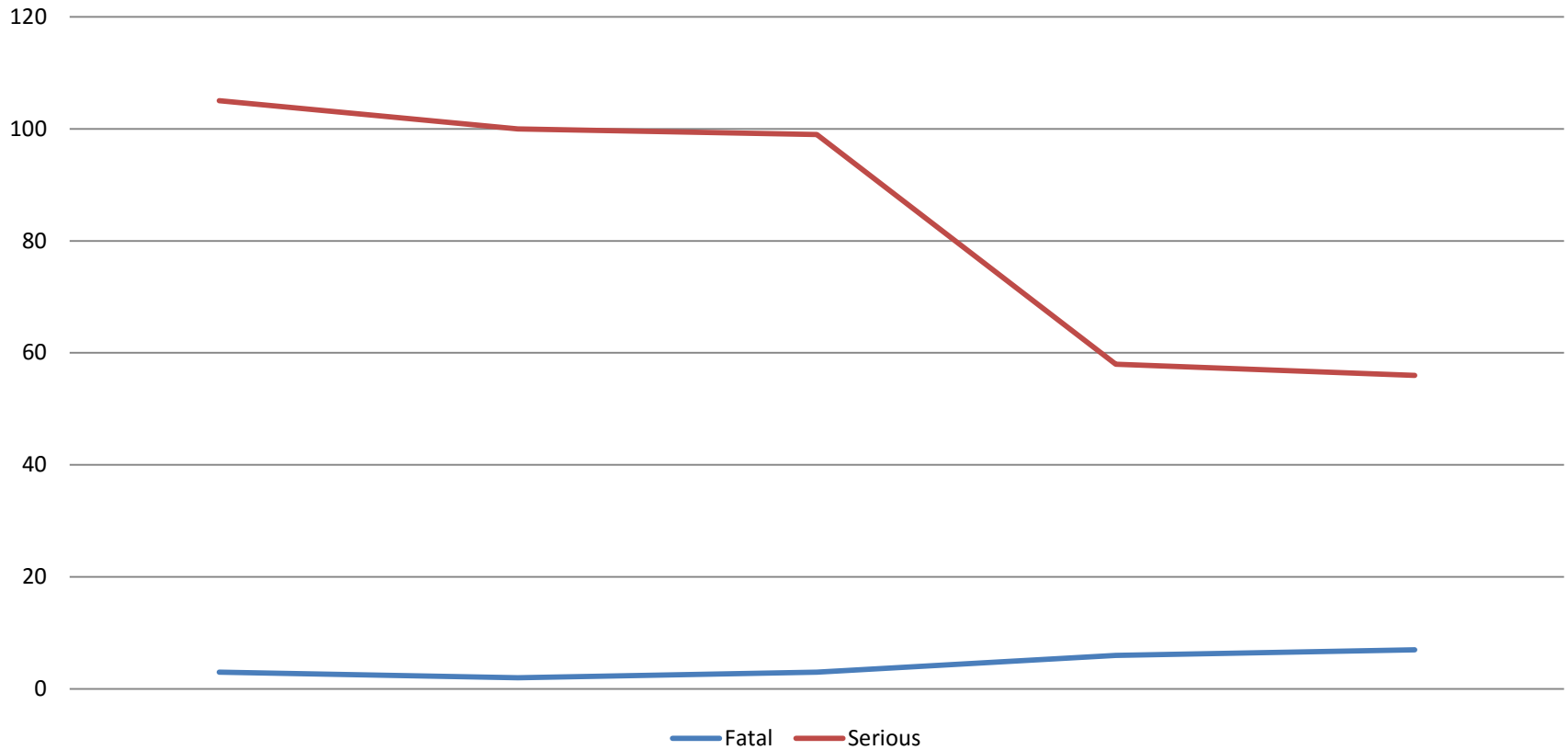


Trends in road casualties 2010 - 2014



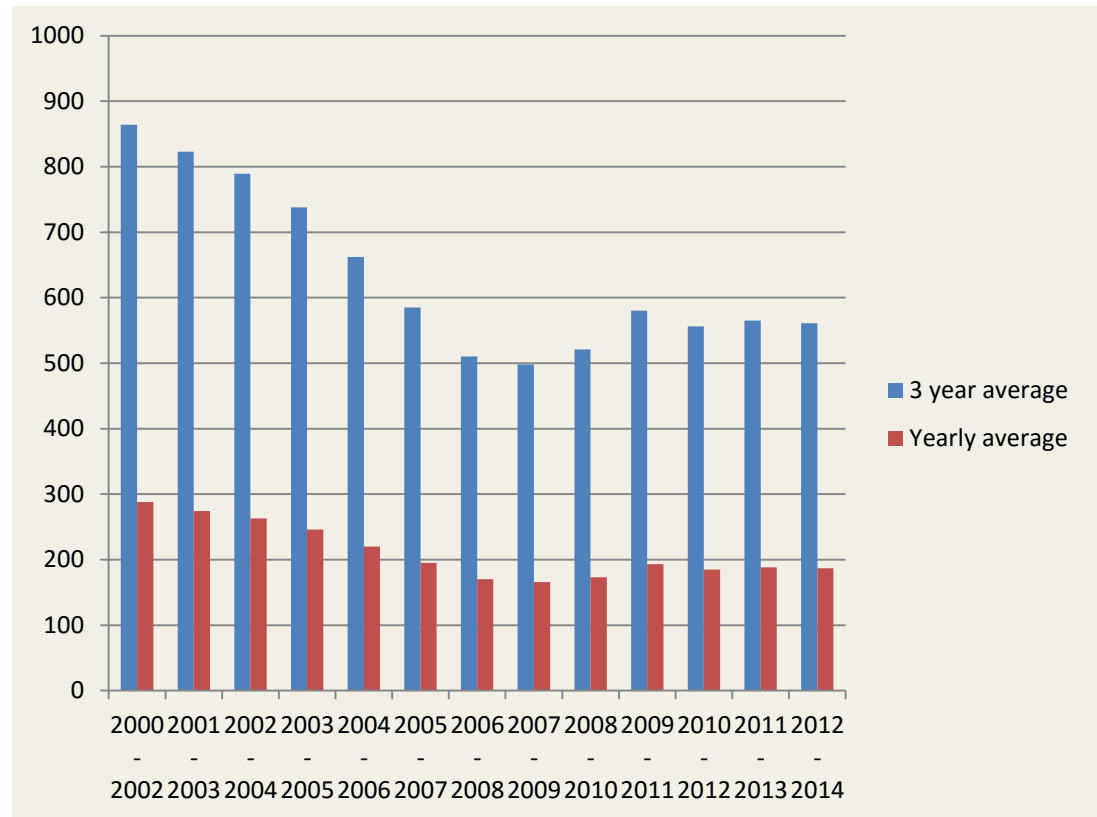
KSI Trend

Killed and Serious Injury Casualties 2010 - 2014



Lewisham Pedestrian trend

	3 year average	Yearly average
2000 - 2002	864	288
2001 - 2003	823	274
2002 - 2004	789	263
2003 - 2005	738	246
2004 - 2006	662	220
2005 - 2007	585	195
2006 - 2008	510	170
2007 - 2009	498	166
2008 - 2010	521	173
2009 - 2011	580	193
2010 - 2012	556	185
2011 - 2013	565	188
2012 - 2014	561	187



For the future.....my suggestion!

- Regular updates on a road safety subject?
- Data on a road user type?
- Main trends/concerns in road safety officers perspective?
- Councillor – main issues raised by public?